

## **FIRE & RESCUE SERIES**



### **3010 - ENFORCER**

Willard Marine's Enforcer is available from 26' – 48' in a variety of configurations. The Enforcer is fast, stable and an excellent platform to support Dive - Rescue operations, (EMT) emergency treatment and is capable of supporting internal fire systems from 500 GPM to 2000 GPM.

### **27 VC COMMANDER**

The Commander series is an excellent choice for harbors, bays, lakes and coastal regions. The vessel is trailerable and can support multi missions such as Dive Teams and EMT.

The Commander is available from 20' - 27' both as Center Console or Cabin configuration.





### **32-V DAUNTLESS**

The Dauntless is the largest of the Deep-V models and is capable of supporting large fire systems, emergency treatment areas and dive/rescue operations to meet the demands of large harbors and coastal to off-shore requirements.

The Dauntless is available in lengths from 28'-65' and can accommodate fire systems in excess of 5000 GPM.



### ***Proven Fire, Rescue and Emergency Response Boat Designs***

Since 1957, Willard Marine, Inc. has served as a global leader in the manufacture of military-grade composite and aluminum boats up to 60-feet in length. With nearly six decades of design, engineering and manufacturing experience, Willard Marine has developed more than 20 types of world-class watercraft for federal and local law enforcement agencies, as well as foreign governments. Willard Marine is proud to exclusively offer proven SeaArk Marine Fire, Rescue and Emergency Response vessel designs that have been used by a wide variety of response agencies throughout the U.S.

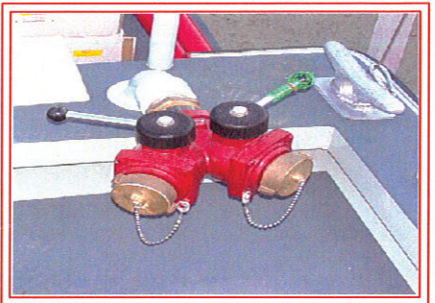
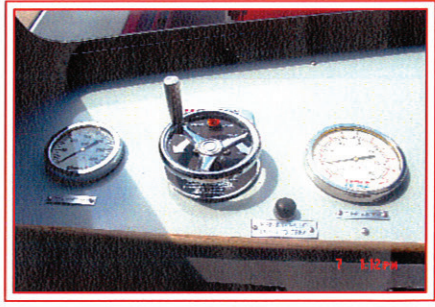
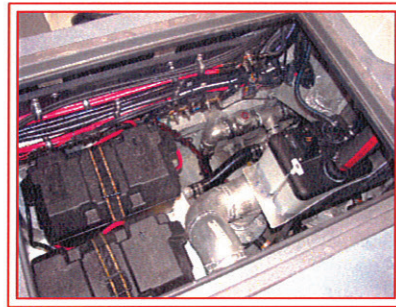
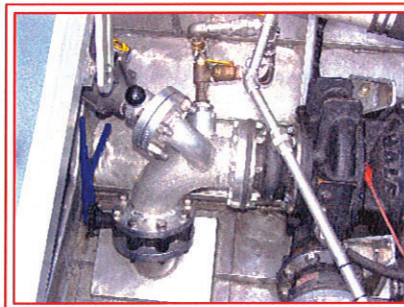
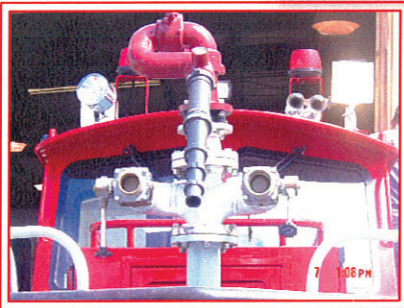
# MODELS

**W** WILLARD  
MARINE

**SEAARK**  
MARINE



# EQUIPMENT



1250 N. Grove St. • Anaheim, CA 92806  
714-666-2150 • Fax 714-632-8136 • WillardMarine.com